



Dependable Source For Quality Collets



HEGDE PRECISION ENGINEERING WORKS

AN ISO 9001 : 2008 COMPANY

Factory & Office : 54/12, D-2 Block, MIDC, Chinchwad, Pune - 411 019. (India)

Fax : (020) 66111239

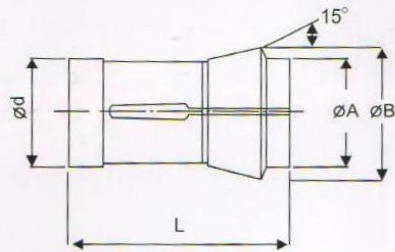
E-mail : hegdeprecision@gmail.com

Phone : (020) 27474208 / 66142479

: hegdeprecision63@rediffmail.com

Website : www.hegdeprecision.co.in

DEADLENGTH COLLETS



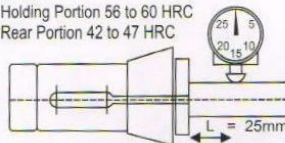
Sr. No.	DIN 6343 Notation	Dimensions				Capacity (Min -max)		
		0d	0B	0A	L	Round	Hex	Square
	Complying With IS 6238							
1	DIN6343-F17.5	17.5	22	16	51	12	10	8
2	DIN6343-F22	22	30	21	55	16	13	11
	DIN6343-F27	27	38.7		72.7	22	19	15
3	DIN6343-F28	28	38	28	70	22	19	15
4	DIN343-F32	32	45	34	75	26	22	18
5	DIN6343-F35	35	48	38	80	30	26	21
6	DIN6343-F42	42	55	42	94	36	30	25
7	DIN6343-F48	48	60	50	94	42	36	29
8	DIN6343-F56	56	68	58	94	50	42	35
9	DIN6343-F66	66	84	73	110	60	52	42
10	DIN6343-F90	90	107	90	130	80		

SPECIFICATIONS REGARDING MATERIAL, HEAT TREATMENT CONCENTRICITY & ACCURACY

Material En 47

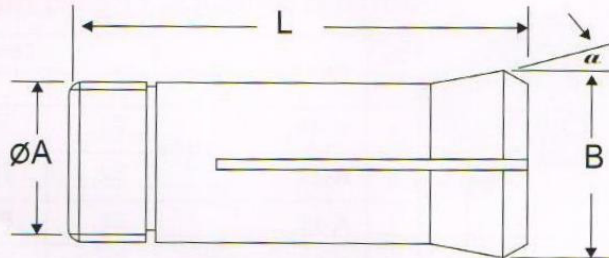
Hardness Holding Portion 56 to 60 HRC
Rear Portion 42 to 47 HRC

Concentricity



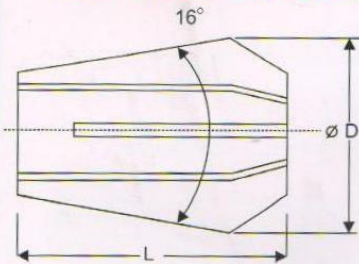
Sr. No.:	Range of Diameter or Width Across Flat (For Square and Hex)		Runout of Collet Bore		
	Over	Upto	Circular (D)	Square (S)	Hex (SI)
1)	4	6	0.02	0.04	0.04
2)	6	10			
3)	10	18	0.03	0.05	0.05
4)	18	24			
5)	30	50	0.04	0.06	0.06
6)	50	Above			

DRAW - TYPE COLLETS



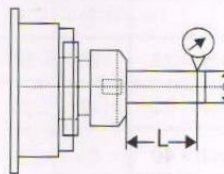
Sr. No.	IS / DIN 6343/OTHER NOTATION	Dimensions					Capacity (max)
		A	Thread	L	B	α	Round
1	5 C	31.75	\varnothing 31.5 x 20 TPI	85.4	37.3	10°	25.4
2	16 C	48	\varnothing 47.5 x 1.75	109.5	57.4	10°	42.5
3	3 J	50.8	\varnothing 50.5 x 20 TPI	95.25	55.9	7°	44.45

DIN 6499 - ER Collet



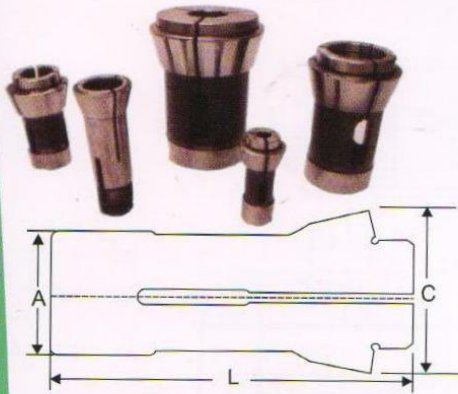
Sr. No.	Description	Dimensions		Capacity (min-Max)
		D	L	Round
1	ER8	8.5	13.5	5
2	ER11	11.5	18	7
3	ER16	17	27	10
4	ER20	21	31	13
5	ER25	26	35	16
6	ER32	33	40	20
7	ER40	41	46	26
8	ER50	52	60	36
				Collapse-0.5/1 mm

ER COLLET CONCENTRICITY-PER DIN 6499



Clamping Range D		L	Maximum T.I.R.	
Min	Max		Precision DIN 6499	High Precision DIN 6499
1.0	1.6	6	0.015	0.008
1.6	3.0	10		
3.0	6.0	16		
5.0	10.0	25	0.020	0.010
10.0	18.0	40		
18.0	26.0	50		
26.0	34.0	60		

COLLETS FOR VARIOUS MACHINES

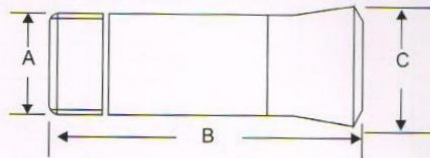


SINGLE SPINDLE TRAUB AUTOMAT COLLETS

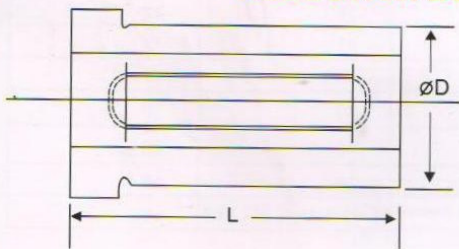
Sr. No.	PART No. / Model	Dimensions			Capacity
		A	L	C	
1	A-15	22	55	30	15
2	A-25	32	75	45	25
3	A-30	35	80	48	30
4	A-32	38	108	50	32
5	A-42	48	94	60	42
6	A-60	66	110	84	60

TRAUB DRILL COLLET SPECIFICATIONS

Sr. No.	PART No. / Model	Dimensions		
		A	B	C
1	A-25	11.5	55	21.5
2	A-42	23	87	33

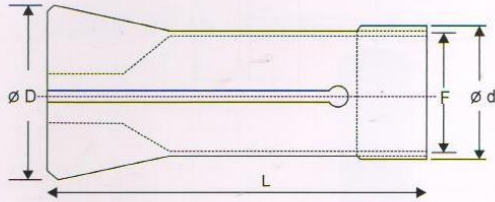


REDUCTION BUSHES FOR BORING BARS



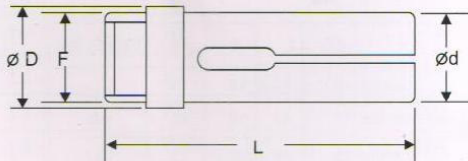
No.	Description	Dimensions		Capacity (Min-Max)
		D	L	
				Round
1	Reduction Bush - 25	25	50	6-20
2	Reduction Bush - 32	32	70	6-25
3	Reduction Bush - 40	40	80	6-32

WICKMAN COLLETS



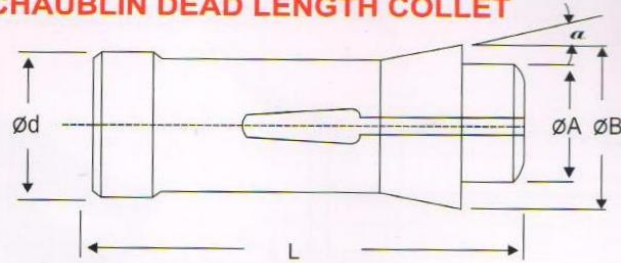
No.	Description	ød	øD	F	L	Capacity (Min-Max)		
						Round	Hex	Square
1	5/8"	29.4	38.1	1 1/32" x 24 BSW, LH	92	16	13.5	11.5
2	1"	41.3	54.5	1.486" X 24 USS, LH	132	25.4	22.2	18
3	1 3/8"	55.47	67	2" X 22 BSW	117	35	30	24.6
4	1 3/4"	64.21	78.5	2 3/8" X 16 BSW	127	44.5	38.0	32.0
5	2 1/4"	76.86	95.5	2.85" X 22 BSW	181	50.8	43.6	35.7
6	2 5/8"	92.07	111	2 7/8" X 24 USF, LH	165	66.6	57.1	46.8

WICKMAN - FEED FINGERS



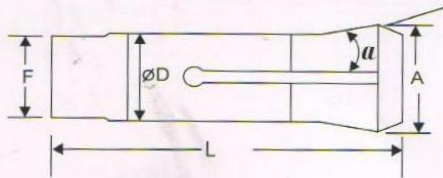
No.	Description	ød	øD	F	L	Capacity (Min-Max)		
						Round	Hex	Square
1	5/8"	21.6	21.6	0.775" x 24 BSW	86	16	13.5	11.5
2	1"	30.9	31.9	30 X 24 USS, LH	133	25.4	22.2	18.0
3	1 3/8"	41.5	42.84	1 19/32" X 22 BSW, LH	118	35	30	24.6
4	1 3/4"	51.5	52.21	50 x 22 BSW, LH	127	44.5	38	32
5	2 1/4"	64.3	65.1	2 15/32" X 22 BSW, LH	171	50.8	43.6	35.7
6	2 5/8"	74.6	75.6	2 7/8" X 24 USF, LH	179	66.6	57.1	46.8

SCHAUBLIN DEAD LENGTH COLLET



Sr. No		Dimensions				α Angle	Capacity (Min-Max)		
		ϕd	ϕB	ϕA	L		Round	Hex	Square
1	F22	22	30	21	55	15	17	12	14.5
2	F25	25	35	27	77	16	21	15	18
3	F27	27	38	30	72.7	15	23	16	20
4	F30	30	42	34	80	16	26	18	22
5	F32	32	45	34	75	15	27	19	23

SCHAUBLIN PULL TYPE COLLET



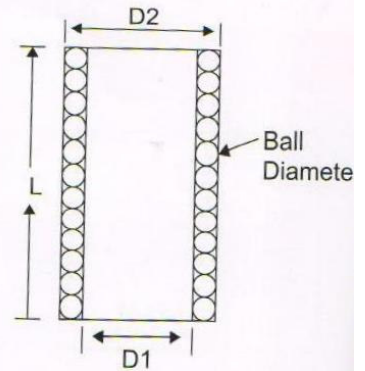
No.	Description	F	ϕD	L	A	α	Capacity Max
1	W10	ϕ 9.83 x 0.833 Angle 45deg / 5 deg Buttress	10	43.6	14	15	6.7
2	W12	ϕ 11.75 X 1.25 Angle 45deg / 5 deg Buttress	12	46	16	15	8.0
3	W15	ϕ 14.75 X 1.25 Angle 45deg / 5 deg Buttress	15	58.3	20.2	15	10.7
4	W20	ϕ 19.7 X 1.66 Angle 45deg / 5 deg Buttress	20	73	26.3	15	14.5
5	W25	ϕ 24.7 X 1.7 Angle 45deg / 5 deg Buttress	25	94	33.8	15	19
6	W31.75	ϕ 31.4X20TPI-USF	31.75	87	37.4	10	25.4
7	B15	M13X1	15	55	21	20	9.5
8	B32UP	M30X1.5	32	102	40	15	24
9	B32	ϕ 29.7 X 15 TPI Angle 45deg / 5 deg Buttress	32	106	40	15	24
10	B45	M42X1.5	45	115	53	15	36
11	P10	Internal Thread	10	39	14	15	5.7

ON request collets for various other multi-spindle automats like

- Gildemeister
- Citizen

- Herbert
- Pittler and many more

BALL CAGES (BRASS/ALLUMINIUM)



No.	Pillar Diameter (mm) (D1)	Bush Diameter (mm) (D2)	Ball Diameter (mm)	Length (mm) (L)
1	18	24	3	65
2	20	26	3	65
3	20	26	3	80
4	24	30	3	65
5	24	32	4	80
6	25	31	3	65
7	25	33	4	65
8	25	33	4	80
9	28	36	4	80
10	28	36	4	100
11	30	38	4	80
12	30	38	4	100
13	32	40	4	80
14	32	40	4	100
15	34	42	4	80
16	34	42	4	100
17	36	44	4	80
18	36	44	4	100
19	40	48	4	80
20	40	48	4	100

SPECIAL BALL CAGES AS PER CUSTOMER'S REQUIREMENT ALSO CAN BE SUPPLIED

SPECIAL / IMPORT SUBSTITUTION COLLETS



A25 - Round - Eccentric - Hex



Automation Collets



CNC - Special Collet



Collets CKS



Collets for Automated Valve Mfg



Double End Collets for Valve Industry



Guide Bush Collet



Collets for PCB Manufacture



ID Holding Expanding
Mandrel Collet



Kitamura - Pull Stud Collet



Split Bush



HMC - Pull Stud Collets